



Better Air is Our Business®

AmericanAirFilter®

AstroCel® TM Disposable Ceiling Module

Hermetically Sealed Ceiling Module

- *Hermetically sealed construction*
- *Low profile, lightweight housing*
- *True High efficiency filter*
- *Leak and/or scan test*

The AstroCel® TM Disposable Ceiling Module is designed for optimum filter performance with an individually ducted system for use in laminar and non-laminar flow cleanroom Class 100,000 to 10.

The AstroCel® TM Disposable Ceiling Module is hermetically sealed to prevent voids and leaks to meet stringent air quality requirements of cleanrooms. It is typically installed in a T-Bar grid system suspended from the ceiling or installed in an AAF AstroDry HD modular ceiling grid. Hold-down clamping is not required.

Its low profile, lightweight, and disposable design makes it ideal for use in hospital operating theatres and laboratories, pharmaceutical, microelectronic, film and optical fiber facilities, food processing plants and other applications where airborne contaminants must be carefully controlled.

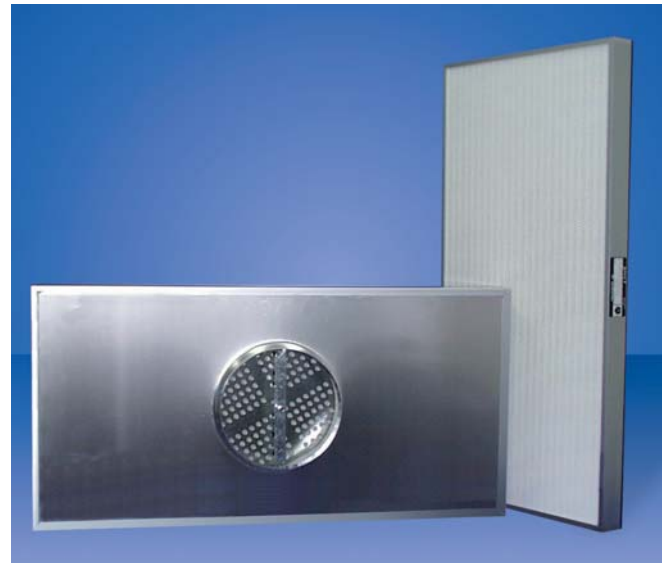
Hermetically Sealed Construction

The AstroCel® TM Disposable Ceiling Module is hermetically sealed and tested to prevent leakage between hood inlet and air leaving side. All metal to metal joints are bonded to eliminate bypass leakage.

The standard module comes with a 250mm (10") diameter inlet, a fixed distribution plate, an integral round duct connection and a white epoxy coated faceguard on the downstream side to protect the HEPA mini-pleat pack.

Low Profile and Lightweight Housing

The AstroCel® TM Disposable Ceiling Module is made of lightweight anodized extruded aluminum. The low profile and lightweight of the AstroCel® TM Disposable Ceiling Module helps to reduce handling and installation time.



True High Efficiency Filter

The AstroCel® TM filter is made of water-resistant and fire retardant glass fiber media.

Choose from two types of true high efficiency filters :

H14 HEPA Filter - 99.999% minimum efficiency on 0.3µm particles.

U15 ULPA Filter - 99.9995% minimum efficiency on 0.12µm particles.

Leak and/or Scan Test

All HEPA filters are leak tested. ULPA filters are scanned with a laser spectrometer with PSL particles for leaks, and tested for efficiency and air distribution.

AstroCel® TM Disposable Ceiling Module

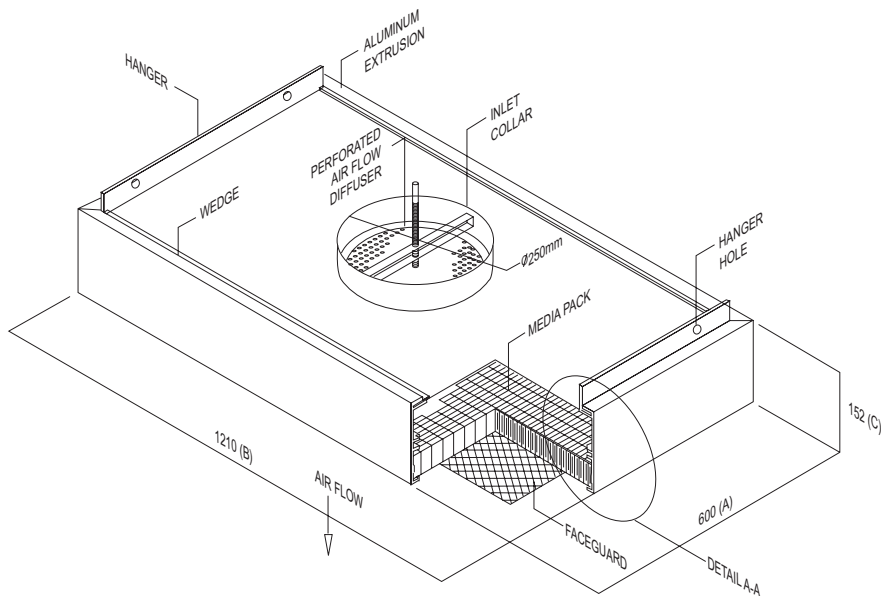
Specifications

Standard

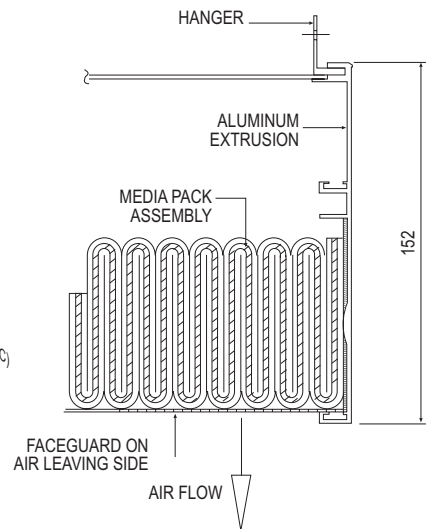
Operating Temperature	: 70°C (158°F)
Housing	: Anodized aluminum extrusion, standard profile
Gasket	: No gasket
Faceguard Location	: Air leaving side
Media	: H14 HEPA Filter (99.99% efficiency on 0.3 µm particles)

Options

: U15 ULPA Filter (99.9995% efficiency on 0.12 µm particles)
Flat profile, one piece foaming polyurethane gasket on air leaving side
Eliminate faceguard
Divider and volume control damper
Adjustable distribution plate with divider
300mm (12") inlet collar



Isometric View



A-A View

Product Information

A	Size in mm		Nominal Airflow @ 0.45 m/s		Initial Resistance @ 0.45 m/s			
	B	C	(m³/h)	(m³/s)	H14 (HEPA) (In.W.G.)	(Pa)	U15 (ULPA) (In.W.G.)	(Pa)
600	600	152	600	0.166	0.50	125	0.58	145
600	915	152	900	0.250	0.50	125	0.58	145
600	1210	152	1200	0.333	0.50	125	0.58	145
600	600	175	600	0.166	0.32	80	0.36	90
600	915	175	900	0.250	0.32	80	0.36	90
600	1210	175	1200	0.333	0.32	80	0.36	90

- Note:**
1. Standard inlet collar is Ø250mm (10").
 2. Other sizes and specifications are available upon request. (Maximum size 610mm x 1220mm)
 3. Recommended final resistance : 1.6" W.G./400Pa.
 4. Add 15 Pa to initial resistance for Module Construction.
 5. Add 50mm(1.97") for collar height.